



## ACCESS ELECTRIC SCISSOR LIFTS

Platform height 19 ft (5.8 m) to 39 ft (11.9 m)



# ACCESS world-class equipment, built to a higher standard.

The range of JCB Access electric scissor lifts is built to a higher standard, to meet the needs of rental companies and contractors. Designed with the benefit JCB's 70-plus years of experience as a construction equipment manufacturer, JCB Access electric scissor lifts set new industry standards for innovative design and exceptional construction quality.

## Greater productivity and performance.

- 1** An operator can use the controls from all sides of the machine, and while standing in the basket or on the ground.
- 2** The control cradle can be used easily by left and right handed operators, and can be hooked on to any side of the machine.
- 3** A waterproof cover on the power-to-platform outlet protects the socket, ensuring safe and reliable use.
- 4** The platform rails feature easy-to-use spring clips, allowing them to fold down for easy maneuvering in confined spaces.
- 5** A charge level indicator provides the operator with battery status information.

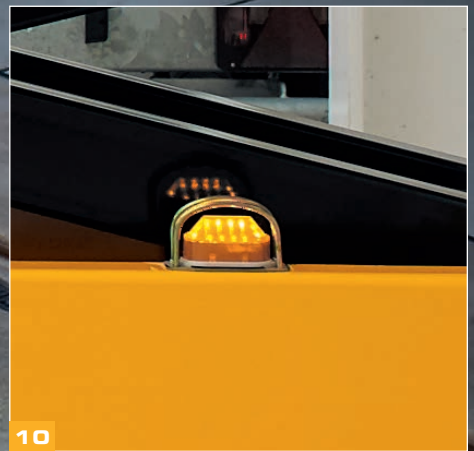
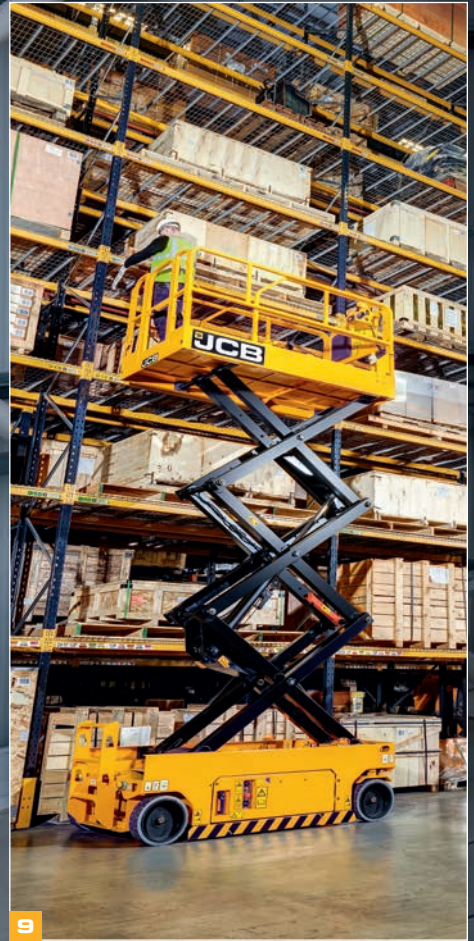




## Designed for reliability. Built to last.

- 1 Full-pivot bosses on the scissor pack provide unmatched stability and durability at any operating height.
- 2 The highly durable and reliable control system features state-of-the-art components and in-built system protection.
- 3 Unique to JCB, wear pads support the door for the battery and hydraulic systems, preventing it from sagging over time.
- 4 Leveraging JCB's decades of experience in manufacturing construction equipment, JCB Access machines feature motor protection plates to protect high-cost components from collision damage.
- 5 An automotive-style foot pedal provides intuitive and ergonomic release of the extension deck.
- 6 The scissor sliding pivots are fully encapsulated in a large nylon block for added stability.
- 7 Robust pothole protection struts enhance durability and reduce maintenance and repair downtime.
- 8 A button wear pad between each scissor section eliminates metal to metal contact when fully closed.
- 9 Industry-standard components allow quick integration of the JCB Access range into existing rental fleets.
- 10 Chassis warning lights are protected from accidental damage.





**ACCESS** built to a higher standard



JCB

4

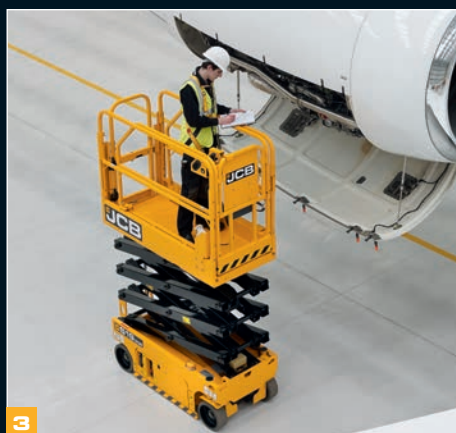
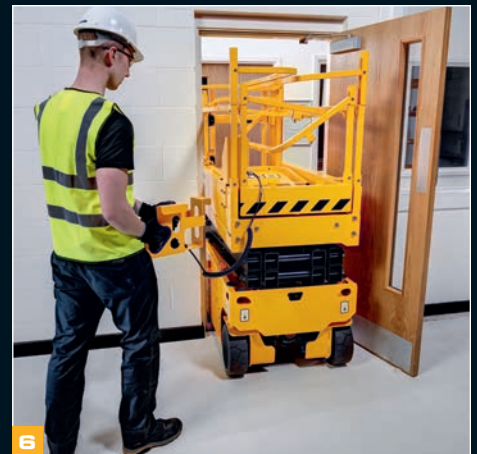
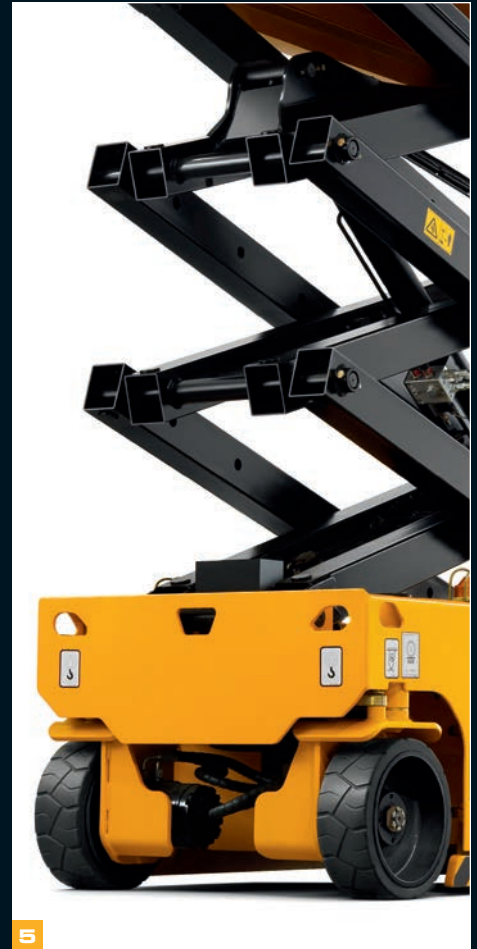
Fire exit

Fire exit

CAUTION

## Easier to use.

- 1** A platform outlet in the basket enables convenient use of power tools.
- 2** The ergonomically-designed door handle makes for easier and safer entry, even with gloved hands.
- 3** Scissor slide blocks fully encapsulate the scissor pins for smoother operation and increased durability.
- 4** The roller design for the extension deck requires minimal effort to extend or retract; the foot pedal allows easy use of deck extension at height.
- 5** A winch point on the front of the chassis aids loading and unloading.
- 6** The control cradle design allows the machine to be operated from the ground, to facilitate manoeuvring within confined areas.
- 7** A large handle on battery isolator is easy to use, even while wearing gloves.



## Safety first.

**1** All safety systems on JCB Access machines meet the latest legislative and regulatory requirements.

**2** The emergency descent handle location at the rear of the machine can be reached even when the machine is positioned tight against a wall.

The emergency brake release handle is also located at the rear of machine.

**3** The pothole protection system is a key part of the safety system, allowing the machine to raise only when it is fully deployed. The system is designed to offer trouble-free operation.

**4** As the basket lowers, a safety stop and 3-second delay reminds the operator to check surroundings before fully closing the scissor pack.

**5** The high-grip step is based on designs used in JCB's dirt equipment, and provides safe entry and exit.



2



3



4

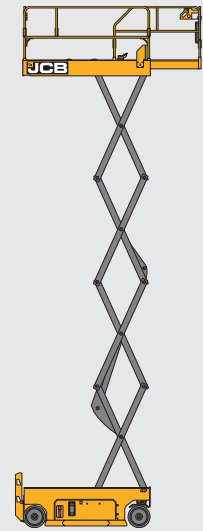
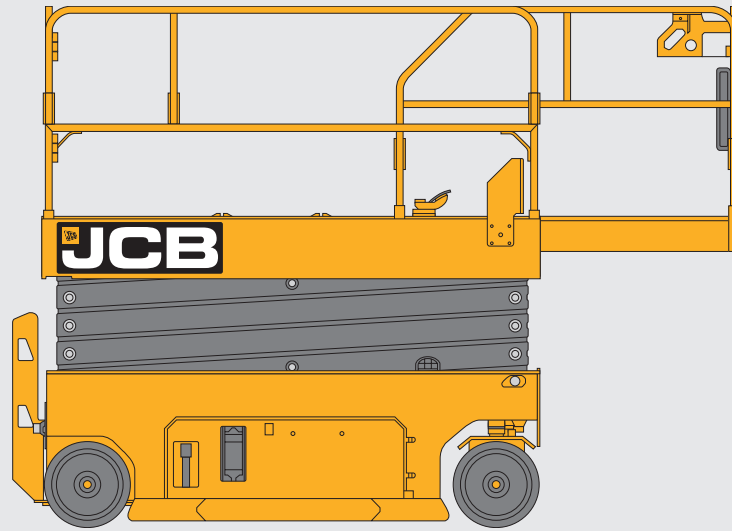
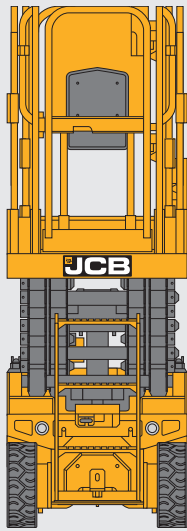




### CONTROL

Fully proportional raise and drive controls, with creep speed mode, allow for precise machine movements.

ACCESS built to a higher standard



### DIMENSIONS – ELECTRIC SCISSORS

Model		S1930E	S2632E	S3246E	S4046E	S4550E
Max. platform height	ft-in (m)	18-9 (5.7)	26-0 (7.92)	31-10 (9.70)	39-0 (11.9)	45-3 (13.8)
Max. working height	ft-in (m)	24-9 (7.7)	32-0 (9.92)	37-10 (11.70)	45-0 (13.9)	51-10 (15.8)
Extension outreach	in (m)	35 (0.9)	35 (0.9)	35 (0.9)	35 (0.9)	35 (0.90)
Overall length (stowed)	ft-in (m)	5-10 (1.78)	7-10 (2.39)	7-10 (2.39)	7-10 (2.39)	9-1 (2.76)
Overall width (stowed)	ft-in (m)	2-6 (0.76)	2-8 (0.81)	3-9 (1.15)	3-9 (1.15)	4-2 (1.27)
Overall height (stowed, guardrail folded)	ft-in (m)	6-1 (1.86)	6-5 (1.96)	6-1 (1.86)	6-6 (1.98)	7-3 (2.20)
Overall height (stowed, guardrail unfolded)	ft-in (m)	6-11 (2.12)	7-8 (2.35)	8-2 (2.48)	8-6 (2.60)	8-6 (2.60)
Overall weight	lb (kg)	3,739 (1,696)	4,808 (2,866)	5,834 (2,646)	6,768 (3,070)	7,921 (3,593)
Max. wheel loading	lb (kg)	1,213 (550)	2,381 (1,080)	2,602 (1,180)	2,602 (1,180)	2,514 (1,140)

### KEY SPECIFICATIONS – ELECTRIC SCISSORS

Model		S1930E	S2632E	S3246E	S4046E	S4550E
Platform size (L x W x H)	in	65 x 30 x 43	89 x 32 x 43	89 x 46 x 43	89 x 46 x 43	104 x 46 x 43
	m	1.64 x 0.76 x 1.1	2.25 x 1.15 x 1.1	2.25 x 1.15 x 1.1	2.25 x 1.15 x 1.1	2.64 x 1.17 x 1.1
Load capacity	lb (kg)	505 (230)	550 (250)	705 (320)	705 (320)	505 (230)
Max. platform occupants (outdoor)	person	1	–	1	1	–
Max. platform occupants (indoor)	person	2	2	2	2	2
Max. allowable side force (indoor)	lbf (N)	90 (400)	90 (400)	90 (400)	90 (400)	90 (400)
Max. allowable side force (outdoor)	lbf (N)	45 (200)	–	45 (200)	45 (200)	0 - Indoor Only
Max. allowable wind speed (outdoor)	m/s / mph	12.5 / 28	–	12.5 / 28	12.5 / 28	0 - Indoor Only
Max. allowable slope (front/back)	degrees	3	3	3	3	3
Max. allowable slope (side/side)	degrees	1.5	1.5	1.5	1.5	1.5
Ground clearance (stowed)	in (m)	2.75 (7)	4 (10)	4 (10)	4 (10)	4 (10)
Wheelbase	in (m)	52 (1.33)	73 (1.85)	73 (1.85)	73 (1.85)	87 (2.22)
Turning radius (outside)	ft-in (m)	4-11 (1.49)	6-11 (2.1)	7-8 (2.35)	7-8 (2.35)	8-5 (2.56)
Turning radius (inside)	in (m)	1.5 (0.04)	0	0	0	0
Gradeability	%	25	25	25	25	25
Max. driving speed (stowed)	mph (km/h)	1.7 (2.8)	2 (3.2)	2 (3.2)	2 (3.2)	2 (3.4)
Max. driving speed (raised)	mph (km/h)	0.5 (0.8)	0.5 (0.8)	0.5 (0.8)	0.5 (0.8)	0.5 (0.8)
Rising speed (loaded)	s	15~20	30~35	53~58	63~68	73~83
Lowering speed (loaded)	s	25~30	35~40	40~45	45~50	61~71
Solid tire dimensions	in (mm)	12 x 4.5 (305 x 115)	15 x 5 (380 x 125)	15 x 5 (380 x 125)	15 x 5 (380 x 125)	15x5 (380x133)
Hydraulic oil tank vol.	gal (L)	3.7 (14)	3.7 (14)	3.7 (14)	4 (16)	2.7 (12.3)
Hydraulic system tank vol.	gal (L)	4.75 (18)	4.75 (18)	5.8 (22)	5.8 (22)	4 (18)
Hydraulic system pressure	Mpa	24	24	3,480 (24)	3,480 (24)	24
Battery	Ah	6V x 4 (225)	6V x 4 (225)	6V x 4 (240)	12V x 4 (150)	12V x 4 (150)
Power unit	V DC (kW)	24 (3.3)	24 (3.3)	24 (3.3)	24 (3.3)	24 (4.5)
Input voltage of charger	V AC	100~240	100~240	100~240	100~240	100~240
Output voltage of charger	A	25	25	25	25	2, front-wheel
Drive and steer model		2, front-wheel	2, front-wheel	2, front-wheel	2, front-wheel	2, rear-wheel
Brake		2, rear-wheel	2, rear-wheel	2 rear-wheel	2 rear-wheel	2 rear-wheel
Tires		Non-marking	Non-marking	Non-marking	Non-marking	Non-marking





**ONE COMPANY, MORE THAN 300 MACHINES.**

Your nearest JCB dealer



**CUSTOMERS FOR LIFE**

**(844) 432-4724**

**fairchildequipment.com**

9999/6002 en-US 02/21 - DW USA 4657.2

### Electric Scissors

Platform height 18'9" ft (5.7 m) to 39 ft (11.9 m)

### JCB North America

2000 Bamford Blvd., Pooler, Georgia, 31322 Tel: (912) 447-2000

Download the very latest information on this product range at [www.jcb.com](http://www.jcb.com)

 JCBNA 
  @JCBNA 
  JCBNORTHAMERICA 
  JCBNA



JCB inc. All rights reserved. No part of this publication may be reproduced, stored in a retrieval system, or transmitted in any form or by any other means, electronic, mechanical, photocopying or otherwise, without prior permission from JCB inc. All references in this publication to operating weights, sizes, capacities and other performance measurements are provided for guidance only and may vary dependant upon the exact specification of machine. They should not therefore be relied upon in relation to suitability for a particular application. Guidance and advice should always be sought from your JCB Dealer. JCB reserves the right to change specifications without notice. Illustrations and specifications shown may include optional equipment and accessories. The JCB logo is a registered trademark of J C Bamford Excavators Ltd.