

X1000AJ COMPACT CRAWLER BOOM LIFT



WORKING
HEIGHT
106'



UP AND OVER
HEIGHT
56'5"



MAX WORKING
HORIZONTAL
OUTREACH
54'2"



PLATFORM
CAPACITY
500lb



THE NEW X1000AJ EXPERIENCE MORE

More Access. More Capacity. More Stability.

The JLG X1000AJ compact crawler boom gives you a **106' working height** and **56' 5" up and over reach**, with an industry-leading **500 lb unrestricted platform capacity**.

The articulated column design allows for a maximum working envelope to access tight, hard to reach indoor and outdoor applications – **even below grade**.

The small footprint allows for compact storage and efficient shipping to and from sites.



LCD Color Control Panel

- Clear cover protects from the elements while providing maximum visibility
- Lockable to deter theft and unauthorized use
- Multi-Language functionality



Track Widening Capability

- Expand for greater stability when traversing sloped ground and retract to a narrow width for traveling through doorways, narrow aisles

Multi-Position Outriggers

- Dual stabilization capabilities for use in standard and narrow workspaces
- One-touch self-leveling outriggers stabilize and level machine on up to a 10-degree drive slope





Class-leading Platform

- 500 lb capacity platform offering 25% larger usable space
- SkyGuard® standard
- Lightweight aluminum alloy construction for ease of removal
- Castor wheels to push detached platform allows for passage through and into confined spaces
- 180-degree platform rotation
- Full color remote control

Two Power Options

- Kubota D902 diesel engine
- Optional 76 V Lithium Ion battery for quiet and clean operation indoors

Transport with Ease

- Fork lifting pockets and heavy duty lifting hooks provide options for transporting the machine to, and around jobsites

Performance

Platform Height	100 ft	30.48 m
Working Height	106 ft	32.30 m
Max Working Horizontal Outreach	54 ft 2 in	16.50 m
Up and Over Height	56 ft 5 in	17.2 m
Platform Capacity	500 lb	227 kg
Swing	360° Non-continuous	
Jib (Range of Articulation)	180° (+85/-95°)	
Platform Size (Standard Two Person)	63 x 28 in	1.60 x 0.71 m
Overall Width	47 in	1.19 m
Stowed Height	6 ft 6 in	1.98 m
Stowed Length	21 ft 3 in	6.48 m
Stowed Length w/out Basket	19 ft 3 in	5.80 m
Track Length	6 ft 10 in	2.08 m
Track Speeds (Diesel)	1.1 mph	1.8 km/h
Track Speeds (Lithium Ion)	.8 mph	1.3 km/h

Max Approach Angles:

Front	18° (33%)
Rear	16° (29%)

Leveling Capability

Gradeability 28%

Maximum Ground Bearing Pressure 11.3 psi .79 kg/cm²

Ground Bearing Pressure Outriggers 58 psi 4.1 kg/cm²

Outrigger Footprint (From Outer Edge)

Total Stabilization Area 18 ft 2 in x 16 ft 5 in (5.49 x 5 m)

Reduced Stabilization Area 22 ft x 12 ft 2 in (6.71 x 3.71 m)

Weight (Diesel)* 16,790 lb 7,616 kg

Weight (Lithium Ion) 17,064 lb 7,740 kg

*Certain options or country standards increase weight.

Standard Specifications

Power

Diesel Engine: Kubota D902 21.6 hp 16.1 kW

Fuel Tank Capacity 6.6 gal 25 L

Electric Motor 76 V 150 AH

Optional: 76V Lithium Ion Battery

Tracks

Standard Non-marking Tracks

Hydraulic System

Capacity 21 gal 80 L

AC Motor 120 V 60 HZ 1.2 kW

Standard Features

- Multi-position Outriggers
- Below Grade Capability
- Fork Lift Pockets + Heavy-duty Lifting Hooks
- 360-degree Non-continuous Swing
- 180-degree Platform Rotator
- 63 x 27 in Two Person Platform
- SkyGuard®

Individual Options

- Flashing Amber Beacon

Additional Options Available Via Aftermarket

- Single-Person 31 x 24 in Platform
- Black Deep-tread Tracks



Equipped For The Job

- Air and water line hookups at base of the machine supply to the platform for jobs such as window-washing or general maintenance/construction tasks that require the use of air-powered tools



Compact To Travel

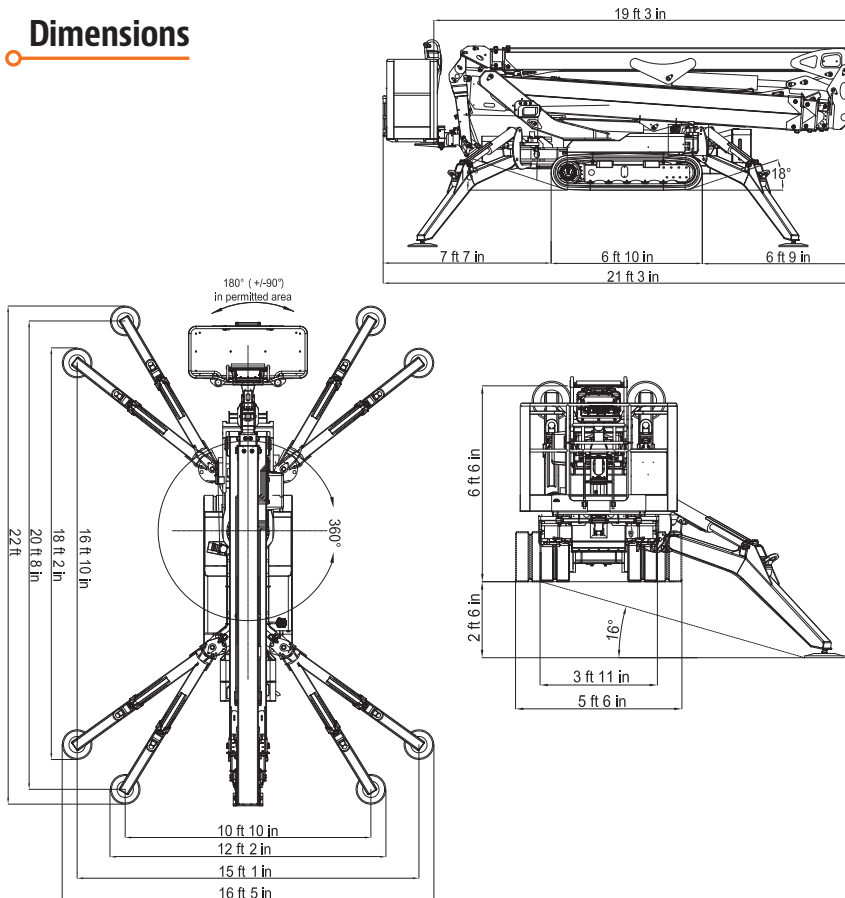
- Compact, narrow footprint fits through a double doorway



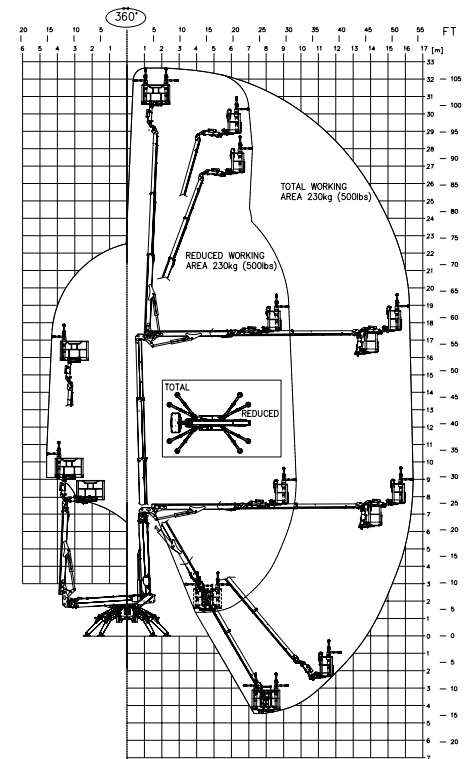
Exclusive QuikStik®

- Boom design delivers faster cycle speeds from ground to elevation — so you can get work done quickly and efficiently

Dimensions



Reach Diagram



(844) 432-4724

fairchildequipment.com



JLG Industries, Inc.

1 JLG Drive
 McConnellsburg, PA 17233-9533
 Telephone 717-485-5161
 Toll-free in US 877-JLG-LIFT
 Fax 717-485-6417

www.jlg.com

An Oshkosh Corporation Company

Part No.: 3131125
 R090518
 Printed in USA